

Exhibit Helps Feed the Hungry

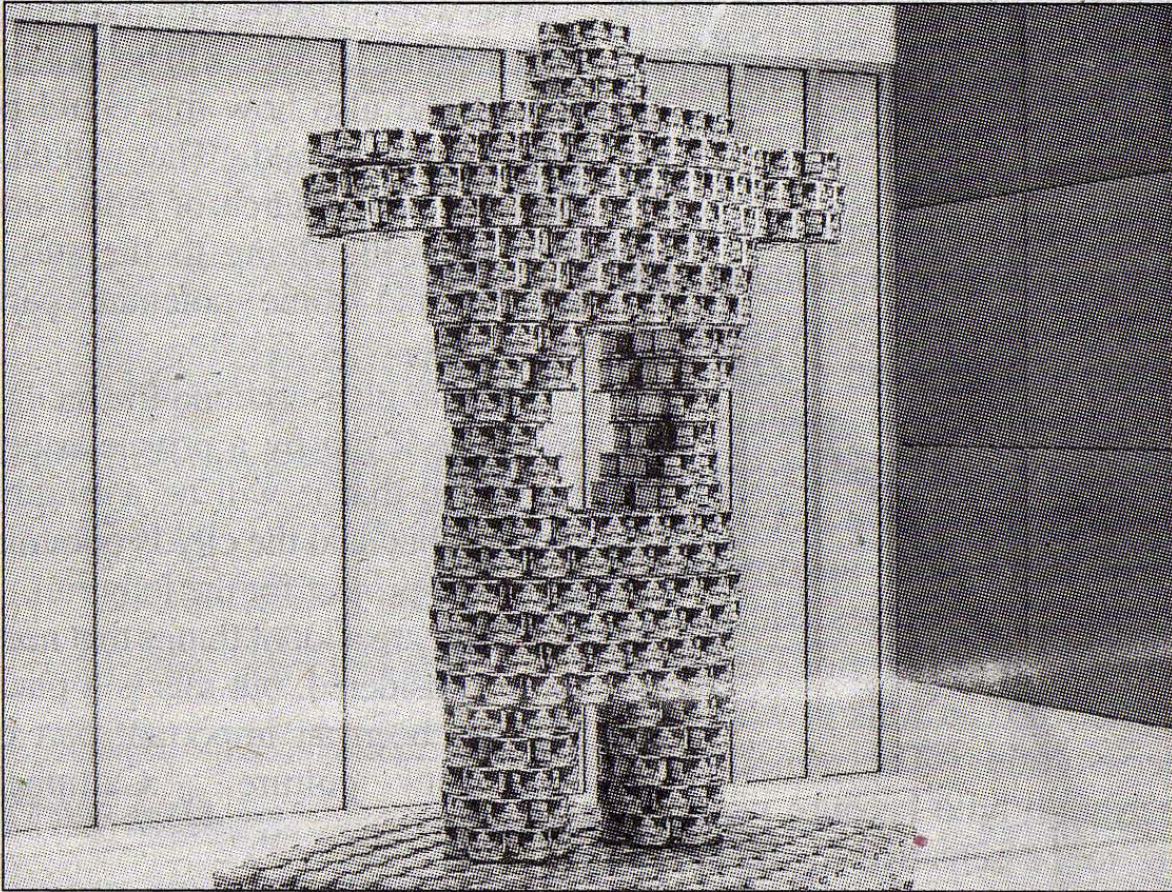


photo courtesy of Lisa Christiansen

Some interesting structures that illustrate the challenges faced by local food banks have been created by architects, designers, builders and engineers and are on display through November 15 at 5900 Wilshire Blvd. The fourth annual "Canstruction L.A." project uses cans of food as building blocks, including HKS Architect's "Filling the Void" (pictured). After the exhibit closes, the cans of food will be donated to the Los Angeles Regional Foodbank for distribution to people in need. The public is encouraged to bring additional cans of food as admission to the exhibit. "Canstruction L.A." is on view at 5900 Wilshire Blvd., also known as the Variety Building, between 8:00am 6:00pm. For more information, visit www.canstructionla.com.